

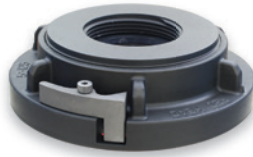
Storz Adapters



Proudly made in the U.S.A.



Male



Female



Swivel Female

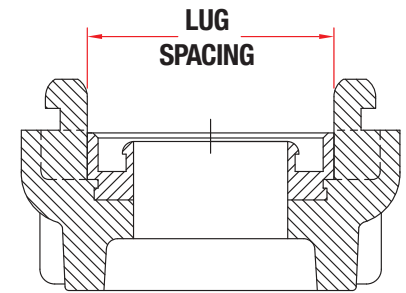


Female
Long Handle Swivel



Storz to Storz

Storz Size	Lug Spacing
1 1/2"	2"
2"	2 5/8"
2 1/2"	3 1/16"
4"	4 1/2"
5"	5 13/16"
6"*	6 5/16"



Features

- Proudly made in the U.S.A.
- Lifetime warranty
- All aluminum components are hard coat anodized per MIL-A-8625 Type III, Class 1
- All Storz heads are forged 6061-T6 aluminum
- No Plastic Bearings
- Storz gaskets are molded Buna-N rubber
- Stainless Steel Lock Lever assembly on all 4, 5, and 6 inch Storz Adapters
- Maximum Working Pressure - 250 PSI
- Due to NFPA 1963 low assembly torque requirements, Storz Adapters hit their test limit around 500 psi at which point the gaskets will fail

Threads are manufactured to the following specifications; Federal Handbook, USDA, NFPA and UL. (Adapters are NOT UL listed) Adapters include a blunt start first thread known as the Higbee located in line with the Higbee indicator on the lug.



* All storz adapters have two lugs except the 6" has three lugs.

The Safe Water Drinking Act section 1417 requires "Lead Free" products to be a minimum of 99.75% lead free.